

HEINZMANN

**Engine &
Turbine
Management**

Dual Fuel Systems

Artemis

Engine

Type CAT 3516

Speed 1000 rpm

Nominal Output 1300 kW

Application Gen-Set (base load)

Customer

Company PonPower

Country Niederlande

Commissioning since 2006

Dual Fuel Operation

Pilot fuel Diesel 220 kW

Gas fuel NG 880 kW

Output 20%/80% 1100 kWel



Engine

Type 8-10x ABC 16VDZD

Speed 1000 rpm

Nominal Output 2670 kWel

Application Gen-Set (base load)/ direct propulsion

Customer

Company Anglo Belgian Corporation

Country Belgium

Commissioning since 2006

Dual Fuel Operation

Pilot fuel Diesel 667 kW

Gas fuel NG 2007 kW

Output 25%/75% 2670 kWel





Engine

Type 1x MAN D2842 V12

Speed 1500 rpm

Nominal Output 400 kWel

Application Gen-Set (base load)



Costumer

Company Hagalis AG/municipal energy supplier Dillingen

Country Germany

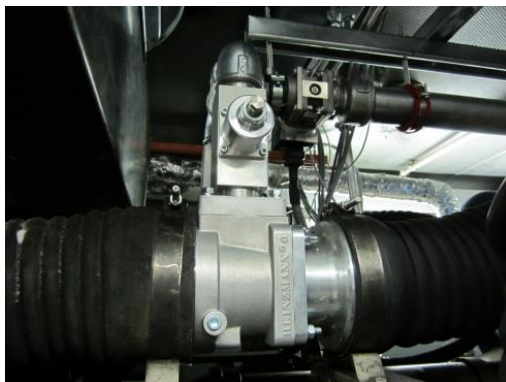
Commissioning December 2011

Dual Fuel Operation

Pilot fuel Diesel 120 kW

Gas fuel NG 280 kW

Output 30%/70% 400 kWel



Engine

Type Volvo Penta TWD 1643GE (one operating, 24 pending, due to defect in main gas supply)

Speed 1500 rpm

Nominal Output 450 kWel

Application Gen-Set (base load)

Customer

Company Hummel Energie Holding GmbH

Country Germany

Commissioning December 2012

Dual Fuel Operation

Pilot fuel Diesel 135 kW

Gas fuel NG 315 kW

Output 30%/70% 450 kWel



Engine

Type Mitsubishi SR6

Speed 1800 rpm

Nominal Output 600 kWel

Application Gen-Set (base load)

Customer

Company Kraft Power Corporation

Country Massillon, OH

Commissioning September 2014

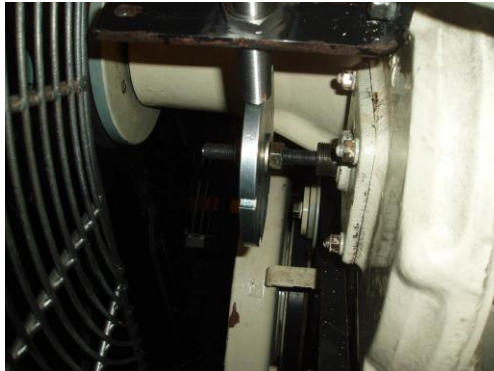
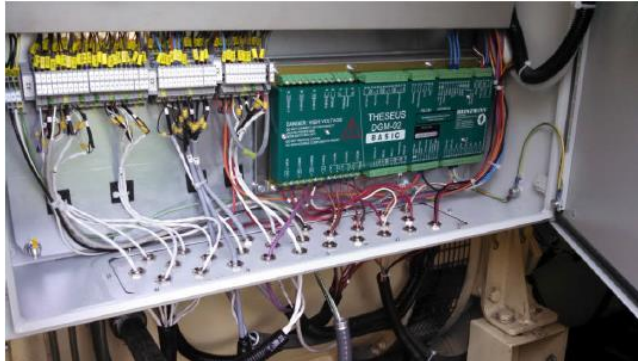
Dual Fuel Operation

Pilot fuel Diesel 186 kW

Gas fuel NG 294 kW

Output 39%/61% 480kWel





Engine

Type Volvo Penta TWD 1641 GE (2 operating engines)

Speed 1500 rpm

Nominal Output 330 kWel

Application Gen-Set (base load)

Costumer

Company Gärtnerei Schwer / Rosen Bähr

Country Germany

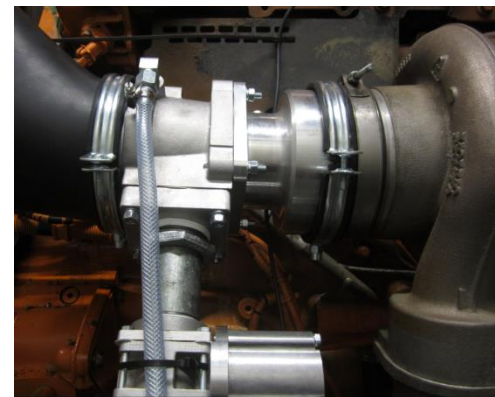
Commissioning January 2015

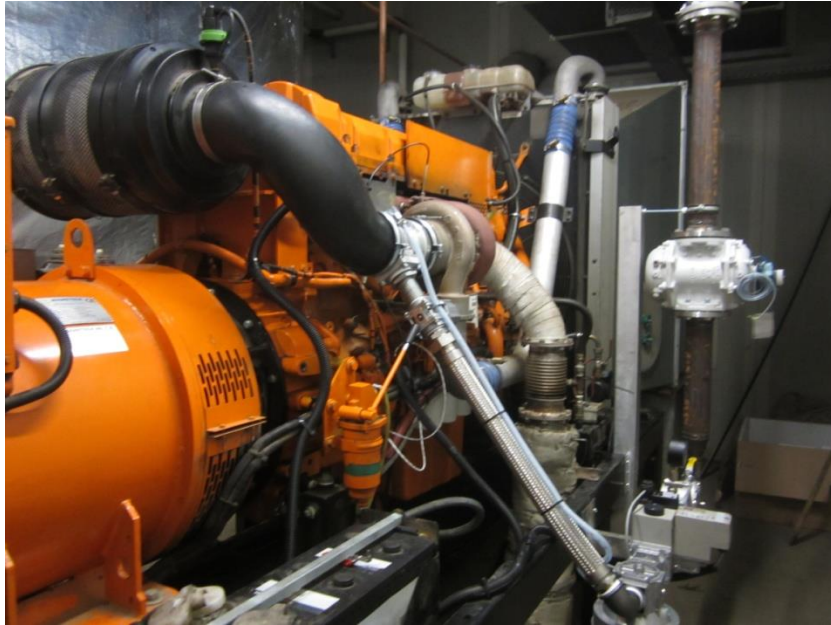
Dual Fuel Operation

Pilot fuel Diesel 90 kW

Gas fuel NG 240 kW

Output 27%/73% 330 kWel





Engine

Type MAN D2842 V12

Speed 1500 rpm

Nominal Output 350 kWel

Application Gen-Set (base load)



Customer

Company Völkl Motorentechnik GmbH

Country Germany

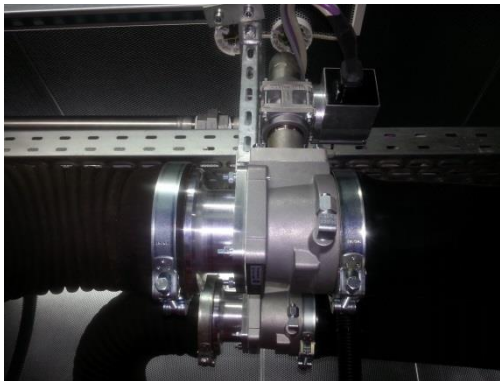
Commissioning July 2015

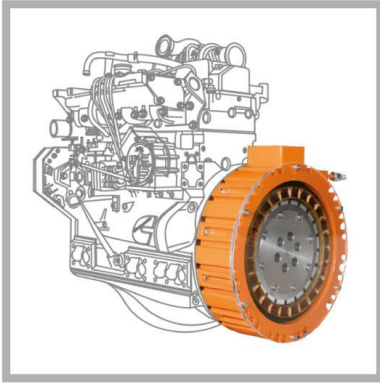
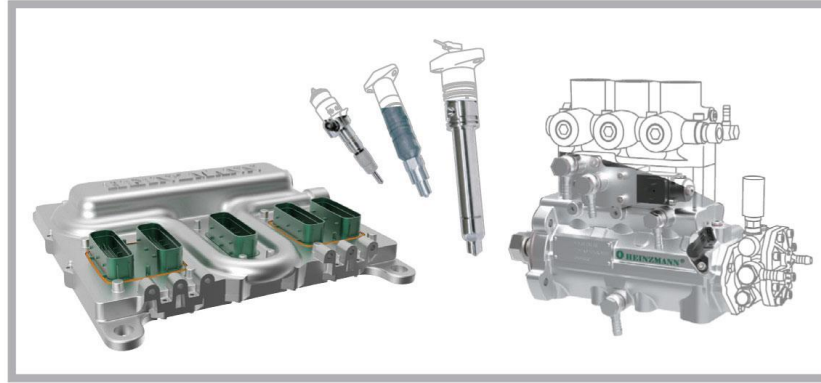
Dual Fuel Operation

Pilot fuel Diesel 150 kW

Gas fuel NG 150 kW

Output 50%/50% 300 kWel (*customer request*)



HEINZMANN***HYBRID DRIVES******ENGINE & TURBINE MANAGEMENT******ELECTRIC DRIVES***